



2023 Ferries Conference

Accommodating the New Commuter

Brent Baker
Senior Vice President, WSP USA
brent.baker@wsp.com

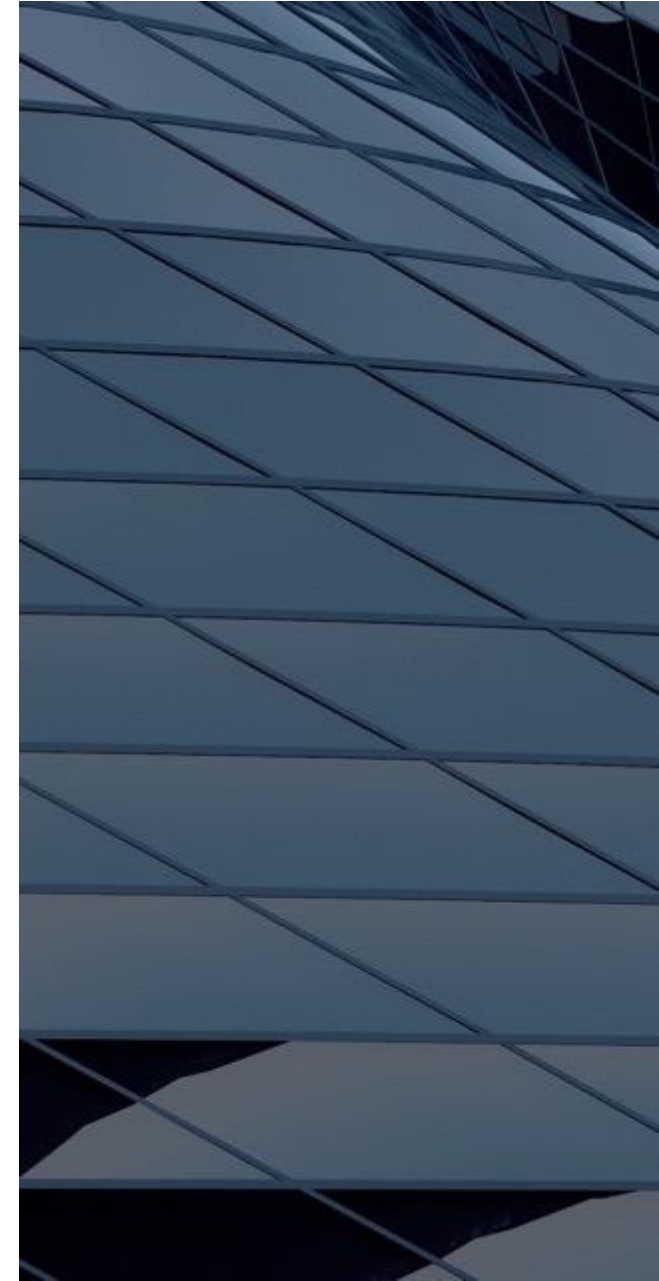
October 3, 2023



WSP and Washington State Ferries (WSF)

WSP has been supporting WSP for over three decades

- Detailed revenue and ridership projections by route, month, and fare category
 - Forecasts updated quarterly
 - Models used to test impacts of proposed fare and service changes
 - Revenue forecasts inform budgeting and planning
- System-wide ridership surveys
- Grant applications
 - Supported 23 applications in the past 6 years
 - 78% award success rate
- Planning and long-range forecasting

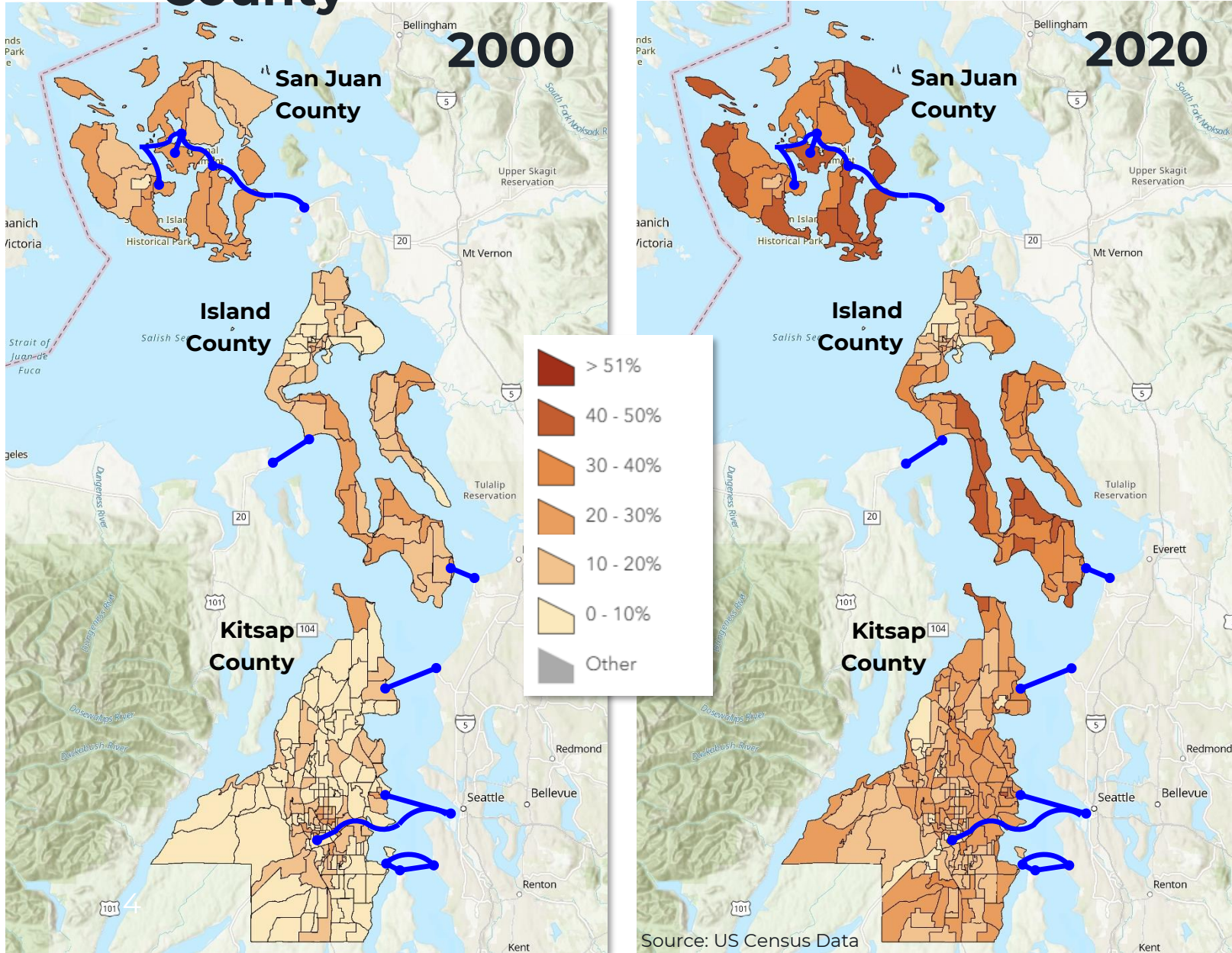


Ferry Commuter Trends

Perspectives from WSF's Forecasting Consultant

- Commuters are primarily measured by sales of pre-paid, multi-ride fare media that offer frequent users a 20% fare discount
- The populations of ferry served communities are aging
- Telecommuting / working from home was already steadily growing over the past two decades, before being amplified by the COVID-19 pandemic
- Employment has grown in ferry served communities, lessening the need for some commute travel
- Fare policy changes over time, including periods of increasing real fares, impact travel decisions
- Future ferry commuters' travel will be less predictable and frequent
- Terminal facilities will need to increasingly support choices and flexibility among many rider types and trip purposes

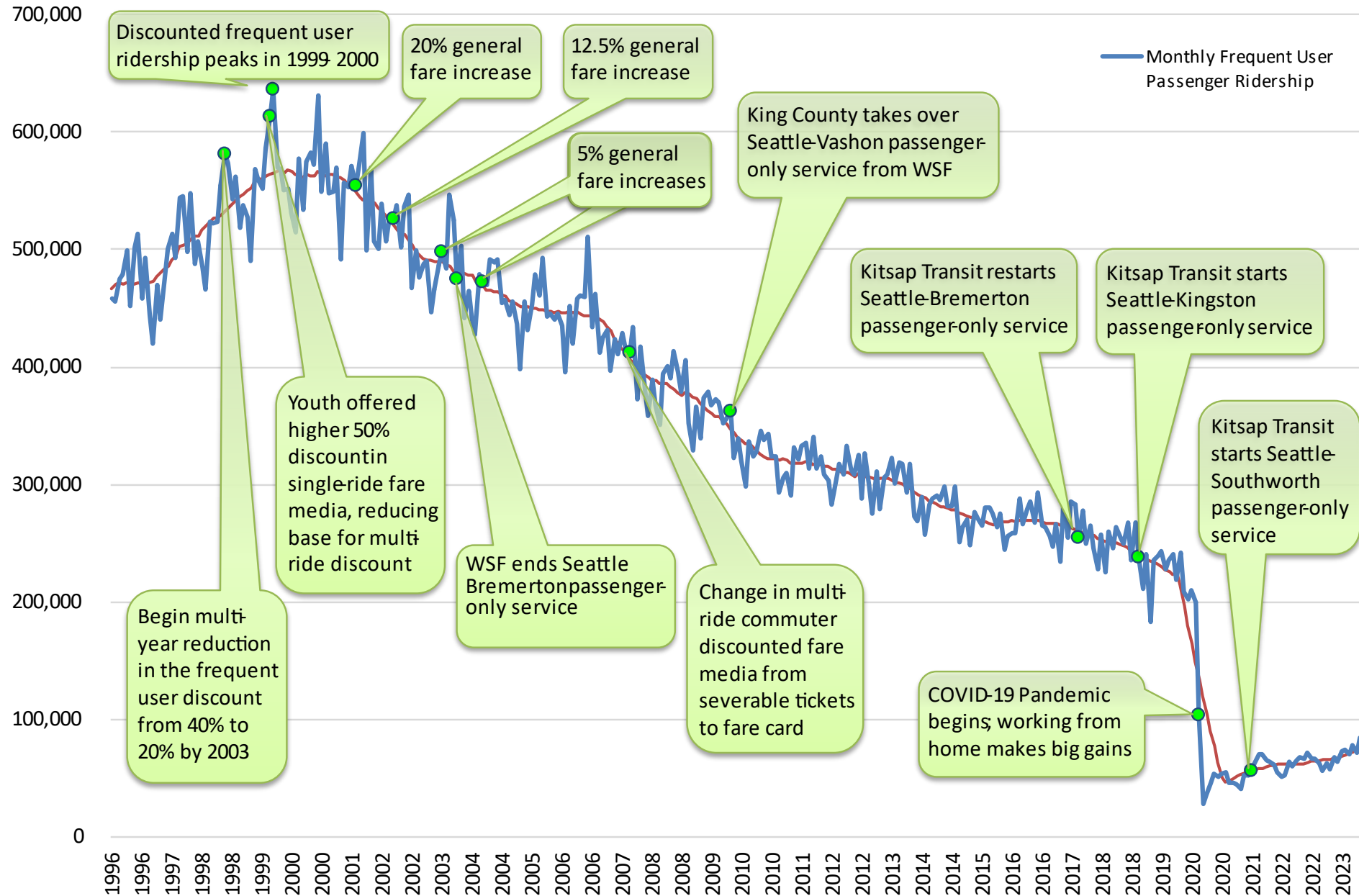
Percentage Shares of Population Age 65+ by Ferry-Served County



The populations of ferry-served communities are aging

- A three-county, ridership-weighted population index of persons age 65+ grew by 140% from 2000 to 2020
- Over the same period, the working age index (ages 19-64) grew by only 9%

WSF Passenger-Commuter Ridership Trends and Related Events



Thank you

Brent Baker
brent.baker@wsp.com



wsp.com